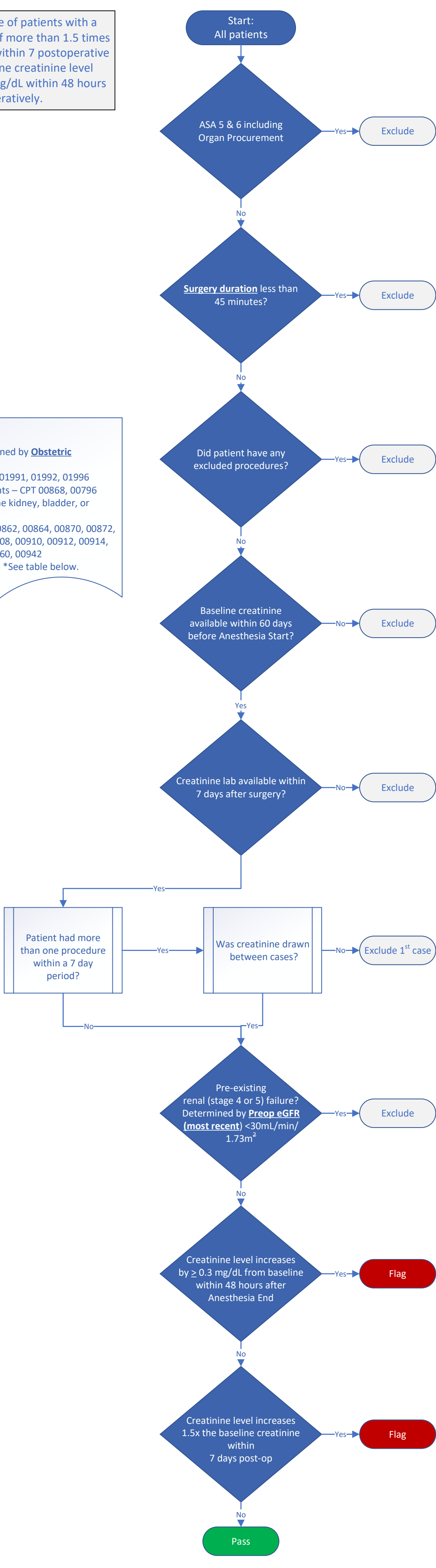


**AKI-01: Acute Kidney Injury**

**AKI-01:** Percentage of patients with a creatinine increase of more than 1.5 times baseline creatinine within 7 postoperative days or the baseline creatinine level increases by > 0.3 mg/dL within 48 hours postoperatively.

- Excluded procedures:**
- ECT
  - Labor Epidural determined by **Obstetric Anesthesia Type**
  - Pain Procedures – CPT 01991, 01992, 01996
  - Renal & Liver Transplants – CPT 00868, 00796
  - Procedures affecting the kidney, bladder, or ureter:
    - Anesthesia CPT: 00862, 00864, 00870, 00872, 00873, 00865, 00908, 00910, 00912, 00914, 00916, 00918, 00860, 00942
    - Surgical CPT Codes \*See table below.



AKI-01 Surgical CPT Code List
<b>Vein Procedures</b> – 35535, 35634, 35636, 37145, 37180, 37181
<b>Incision Procedures on the Kidney</b> – 50010, 50020, 50021, 50040, 50045, 50060, 50065, 50070, 50075, 50080, 50081, 50120, 50125, 50130, 50135, 50200, 50205, 50220, 50225, 50230, 50234, 50236, 50240, 50250, 50280, 50290
<b>Renal Transplantation Procedures</b> – 50340, 50360, 50365, 50370, 50380
<b>Renal Pelvis Catheter-Based Procedures</b> – 50382, 50384, 50385, 50386, 50387, 50390, 50392, 50393, 50395
<b>Procedures on the Kidney</b> – 50400, 50405, 50500, 50520, 50525, 50540, 50541, 50542, 50543, 50544, 50545, 50546, 50548, 50551, 50553, 50555, 50557, 50561, 50562, 50570, 50572, 50574, 50575, 50576, 50580, 50590, 50592, 50593
<b>Incision/Biopsy Procedures on the Ureter</b> – 50600, 50605, 50610, 50620, 50630, 50650, 50660, 50688, 50700, 50715, 50722, 50725, 50727, 50728, 50740, 50750, 50760, 50770, 50780, 50782, 50783, 50785, 50810, 50815, 50830, 50840, 50845, 50860, 50900, 50920, 50930, 50940, 50945, 50947, 50948, 50951, 50953, 50955, 50957, 50961, 50970, 50972, 50974, 50976, 50980
<b>Procedures on the Bladder</b> – 51020, 51030, 51040, 51045, 51050, 51060, 51065, 51080, 51800, 51820, 51840, 51841, 51845, 51860, 51865, 51880, 51900, 51920, 51925, 51940, 51980, 51500, 51520, 51525, 51530, 51535, 51550, 51555, 51565, 51570, 51575, 51580, 51585, 51590, 51595, 51596, 51600, 51605, 51610, 51700, 51701, 51703, 51715, 51720, 51725, 51726, 51727, 51728, 51729, 51736, 51741, 51784, 51785, 51792, 52000, 52001, 52005, 52007, 52010
<b>Urethra/Pelvis/Bladder Transurethral Surgical Procedures</b> – 52204, 52214, 52224, 52234, 52235, 52240, 52250, 52260, 52265, 52270, 52275, 52276, 52277, 52281, 52282, 52283, 52285, 52290, 52300, 52301, 52305, 52310, 52315, 52317, 52318, 52320, 52325, 52327, 52330, 52332, 52334, 52341, 52342, 52343, 52344, 52345, 52346, 52351, 52352, 52353, 52354, 52355, 52400, 52402, 52450, 52500, 52601, 52630, 52640, 52647, 52648, 52649, 52700
<b>Incision Procedures on the Urethra</b> – 53060, 53200, 53210, 53215, 53230, 53270, 53275, 53430, 53431, 53445, 53446, 53447, 53448, 53449, 53500, 53502, 53600, 53601, 53605, 53620, 53621, 53660, 53661, 53665, 53850, 53852, 53855
<b>Procedures on the Penis or Prostate</b> – 54390, 55801, 55821, 55831
<b>Procedures on the Vagina</b> – 57220, 57230, 57240, 57284, 57285, 57310, 57311, 57320, 57330, 57423