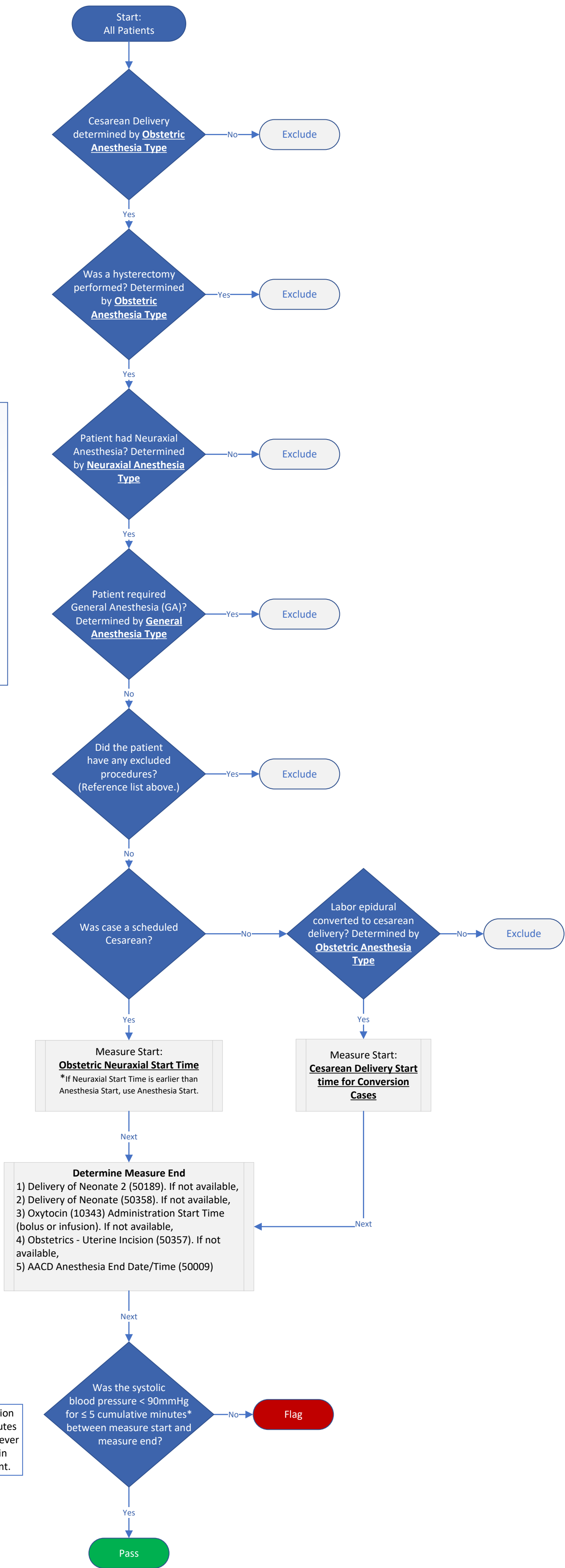


BP-04-OB: Percentage of cases with systolic blood pressure <90mmHg for less than or equal to 5 minutes during the time from neuraxial placement to delivery.

- Excluded Procedures:**
- Abnormal uterine or vaginal bleeding, unspecified (ICD-10: N93.9).
 - Emergency cesarean delivery with diagnosis of placental abruption (ICD-10: O45*).
 - Hemorrhage from placenta previa, antepartum condition or complication (ICD-10: 641.13).
 - Hemorrhage from placenta previa, delivered, with or without mention of antepartum condition (ICD-10: 641.11).
 - Newborn affected by intrauterine blood loss from ruptured cord (ICD-10: P50.1).
 - Placenta previa with hemorrhage, third trimester (ICD-10: O44.13).
 - Rupture of uterus (spontaneous) before onset of labor (ICD-10: O71.0).
- *ICD-10 codes associated with the case and documented from 7 days before to 30 days after the case are considered.

Measure Time Period
 Neuraxial placement to Neonate Delivery.
 Cesarean Delivery procedure is determined by the 'Obstetric Anesthesia Type' phenotype
 Use of General Anesthesia is determined by the 'Anesthesia Technique: General' phenotype



*Each incidence of hypotension will count for a max of 5 minutes or until 'Measure End' (whichever is sooner) if there is a gap in blood pressure measurement.