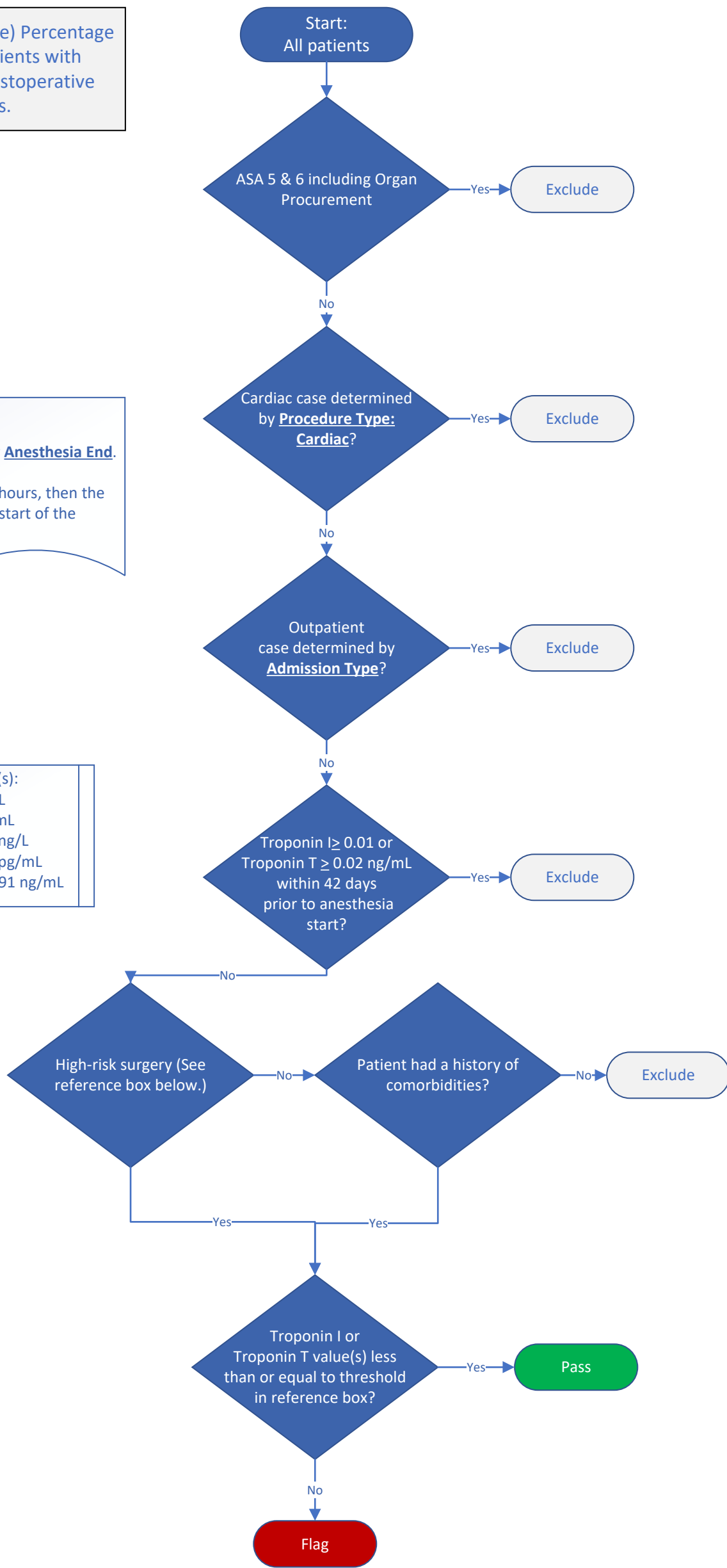


**CARD-03 : Myocardial Injury, High Risk Patients Edit**

**CARD-03:** (Inverse Measure) Percentage of high cardiac risk patients with significantly elevated postoperative troponin levels.

**Measure Time Period:**  
**Anesthesia End** to 72 hours after **Anesthesia End**.  
 \*If another case starts within 72 hours, then the time window ends at anesthesia start of the subsequent case.

- Troponin I or Troponin T value(s):**
- Troponin I (ctnl)  $\leq$  600 ng/L
  - Troponin I (ctnl)  $\leq$  0.6 ng/mL
  - Troponin T (hs-cTnT)  $\leq$  91 ng/L
  - Troponin T (hs-cTnT)  $<$  91 pg/mL
  - Troponin T (hs-cTnT)  $<$  0.091 ng/mL



High Risk Surgery Type	Anesthesia CPT Codes
Intraperitoneal	00730, 00754, 00756, 00790, 00792, 00794, 00796, 00797, 00840, 00844, 00846, 00848, 00851, 00866, 01140
Intrathoracic	00500, 00539, 00540, 00541, 00542, 00546, 00548, 00625, 00626, 01636
Suprainguinal Vascular	00216, 00350, 00670, 00770, 00880, 00882, 01650, 01652, 01654, 01656, 01770, 01772, 01925, 01926

Comorbidity	Specific Diagnostic Criteria
Congestive Heart Failure	Elixhauser Comorbidity – Congestive Heart Failure
Diabetes	Elixhauser Comorbidity – Diabetes (uncomplicated) Elixhauser Comorbidity – Diabetes (complicated)
Ischemic Heart Disease	MPOG Phenotype – Coronary Artery Disease
Cerebrovascular Disease	MPOG Phenotype – Cerebrovascular Disease
Chronic Kidney Disease	Most recent serum creatinine within 60 days $>$ 2.0 mg/dL