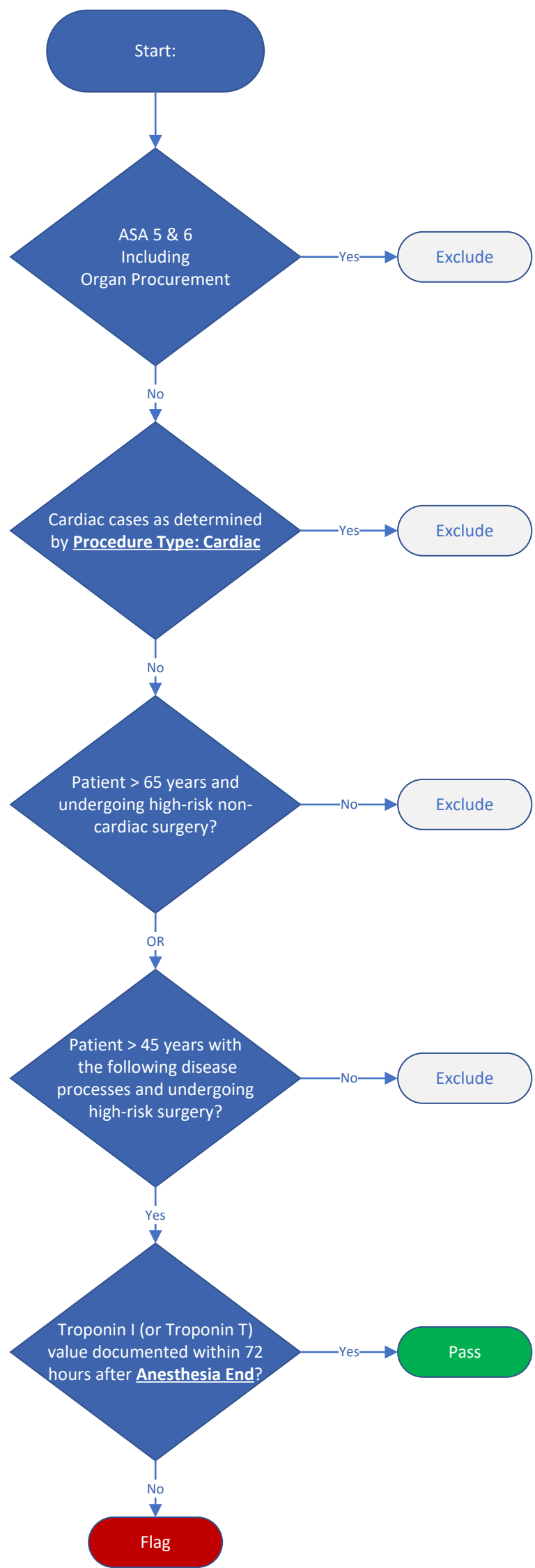


CARD-04: Postoperative troponin evaluation for high risk patients

CARD-04: Percentage of patients with cardiac risk where troponin levels were checked postoperatively



- Disease processes**
- History of ischemic heart disease
 - Congestive heart failure
 - Cerebrovascular disease
 - Diabetes requiring preoperative insulin
 - Chronic kidney disease (baseline Cr > 2.0 mg/dL)

| High Risk Surgery Type | Anesthesia CPT Codes |
|-------------------------|---|
| Intraperitoneal | 00730, 00754, 00756, 00790, 00792, 00794, 00796, 00797, 00840, 00844, 00846, 00848, 00851, 00866, 01140 |
| Intrathoracic | 00500, 00539, 00540, 00541, 00542, 00546, 00548, 00625, 00626, 01636 |
| Supra-inguinal Vascular | 00216, 00350, 00670, 00770, 00880, 00882, 01650, 01652, 01654, 01656, 01770, 01772, 01925, 01926 |

| Comorbidity | Specific Diagnostic Criteria |
|--------------------------|--|
| Congestive Heart Failure | Elixhauser Comorbidity – Congestive Heart Failure |
| Diabetes | Elixhauser Comorbidity – Diabetes (uncomplicated) Elixhauser Comorbidity – Diabetes (complicated) |
| Ischemic Heart Disease | MPOG Phenotype – Coronary Artery Disease |
| Cerebrovascular Disease | MPOG Phenotype – Cerebrovascular Disease |
| Chronic Kidney Disease | Most recent serum creatinine within 60 days > 2.0 mg/dL |