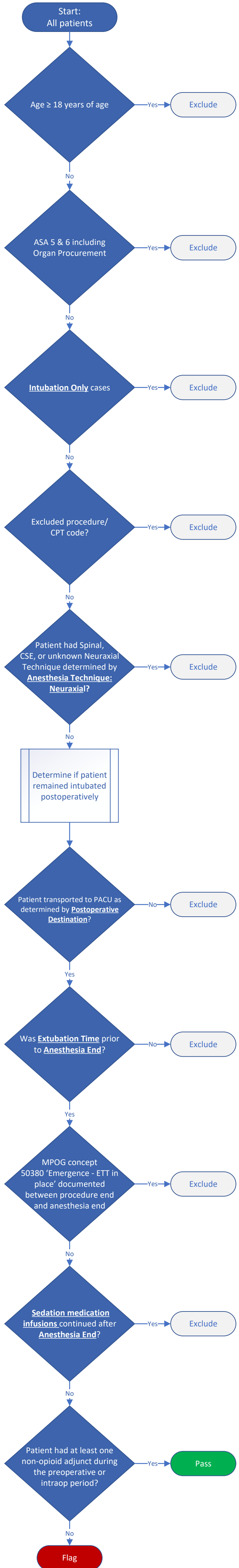


PAIN-01-Peds : Multimodal Analgesia, Pediatrics

PAIN-01-Peds: Percentage of pediatric patients < 18 years old who undergo a procedure and receive at least one non-opioid adjunct preoperatively or intraoperatively.

Measure Time Period:
Preop Start to Anesthesia End
Preop Start determined by the **Preop Start Phenotype**.
Anesthesia end determined by the **Anesthesia End Phenotype**.

- Excluded Procedures:**
- **Bronchoscopy**
 - Block only cases
 - Cases that received no analgesia
 - Central Line Placement (CPT: 00532)
 - **ECT**
 - **Endoscopy**
 - **Diagnostic Imaging Procedure**
 - Lumbar Puncture (CPT: 00635)
 - Myringotomy & Tube cases
 - Obstetric Procedures determined by **Obstetric Anesthesia Type**
 - Open Cardiac procedures determined by **Procedure Type: Cardiac Surgery**
 - Otoscopy (CPT: 00124)
 - Pain Management Only (CPT: 01990, 01991, 01992, 01999)
 - **TEE/Cardioversions**



OPIOID SPARING MEDICATION- must be administered between Anesthesia Start and Anesthesia End via a valid route.

10007 Acetaminophen
10222 Ibuprofen
10747 Naproxen
10116 Celecoxib
10765 Meloxicam
10239 Ketorolac
10132 Clonidine
10149 Dexmedetomidine
10238 Ketamine
10453 Propofol w/ Ketamine 10 mg/mL + 1 mg/mL
10572 Propofol w/ Ketamine 10 mg/mL + Unspecified Ketamine
10577 Propofol w/ Ketamine 10 mg/mL + 0.5 mg/mL
10578 Propofol w/ Ketamine 10 mg/mL + 1.5 mg/mL
10579 Propofol w/ Ketamine 10 mg/mL + 2mg/mL
*Systemic lidocaine administered via IV infusion is considered as an alternative to regional anesthesia techniques.

MEDICATION ROUTES
2001 Intravenous
2004 Intramuscular (*Ketorolac only)
2008 Oral
2009 Nasal
2023 Enteric Tube
2012 Rectal

Local Anesthetic Considerations
Captured through administration of medications with text including ‘-caine’ via medication routes NOT including:
2001 Intravenous
2034 Laryngotracheal
2006 Inhalational
2024 Endotracheal
2004 Intramuscular (Ketorolac only)

LOCAL ANESTHETIC
10516 Other – Local Infiltration medication
50626 Misc – Local Infiltration of surgical site by surgical team

Intraop notes mapped to ‘Misc – Local Infiltration of surgical site by surgical team’ (ID:50626) are also considered.

Neuraxial Anesthesia: Caudal, Epidural, and Neuraxial-Multiple determined by Anesthesia Technique: Neuraxial

Regional Block determined by Anesthesia Technique: Peripheral Nerve Block