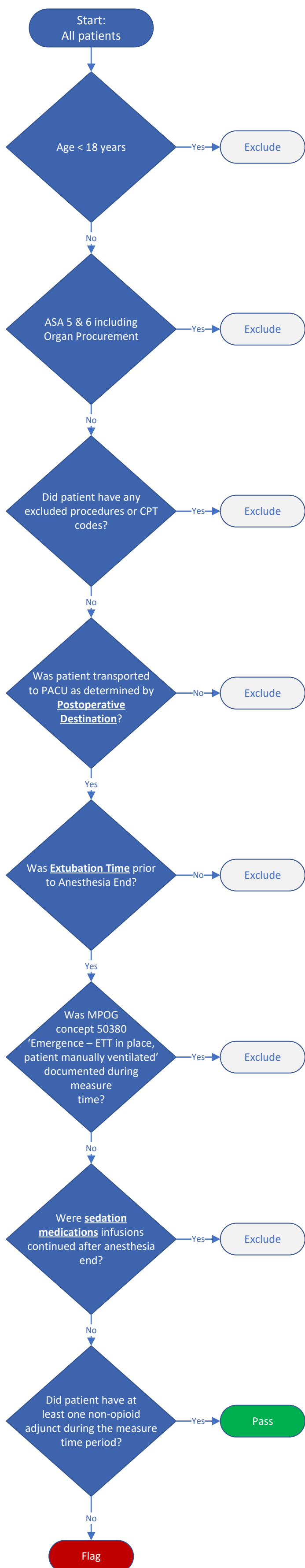


PAIN-02 : Multimodal Analgesia

PAIN-02: Percentage of adult patients who undergo a procedure and receive at least one non-opioid adjunct preoperatively or intraoperatively.

- Excluded Procedures:**
- **Bronchoscopy**
 - Central Line Placement (CPT: 00532)
 - **Diagnostic Imaging Procedures**
 - **ECT**
 - **Endoscopy**
 - Eye Procedures (CPT: 00103, 00140, 00142, 00144, 00145, 00147, 00148)
 - **Intubation Only**
 - Lumbar Puncture (CPT: 00635)
 - Obstetric procedures determined by **Obstetric Anesthesia Type**
 - Open Cardiac procedures determined by **Procedure Type: Cardiac**
 - Otoscopy (CPT: 00124)
 - Pain Management Only (CPT: 01990, 01991, 01992, 01999)
 - **Rooms tagged as 'Radiology - Interventional Radiology'**
 - **Rooms tagged as 'Other - offsite anesthesia'**
 - **TEE/Cardioversions**

Measure Time Period:
Preop Start determined by the **Preop Start** Phenotype to Anesthesia end determined by the **Anesthesia End** Phenotype.



OPIOID SPARING MEDICATION

- 10007 Acetaminophen
- 10222 Ibuprofen
- 10747 Naproxen
- 10116 Celecoxib
- 10765 Meloxicam
- 10239 Ketorolac
- 10132 Clonidine
- 10149 Dexmedetomidine
- 10238 Ketamine
- 10453 Propofol w/ Ketamine 10 mg/mL + 1 mg/mL
- 10572 Propofol w/ Ketamine 10 mg/mL + Unspecified Ketamine
- 10577 Propofol w Ketamine 10 mg/mL + 0.5 mg/mL
- 10578 Propofol w/ Ketamine 10 mg/mL + 1.5 mg/mL
- 10579 Propofol w/ Ketamine 10 mg/mL + 2mg/mL

MEDICATION ROUTES

- 2001 Intravenous
- 2008 Oral
- 2009 Nasal
- 2023 Enteric Tube

Opioid Sparing Medications must be administered between Preop Start and Anesthesia End via a valid route. Lidocaine given IV is not considered.

Local Anesthetic Considerations

Captured through administration of medications with text including '-caine' via medication routes not including

- 2001 Intravenous
- 2034 Laryngotracheal
- 2006 Inhalational
- 2024 Endotracheal

LOCAL ANESTHETIC

- 10516 Other – Local Infiltration medication
- 50626 Misc – Local Infiltration of surgical site by surgical team

Volumes of < 1 mL are not considered
Intraop notes mapped to 'Misc – Local Infiltration of surgical site by surgical team' (ID:50626) are also considered.

Regional/Neuraxial Block is determined by the **Peripheral Nerve Block** and **Anesthesia Technique: Neuraxial** phenotypes, respectively. Documentation considered from Preop Start through PACU End.