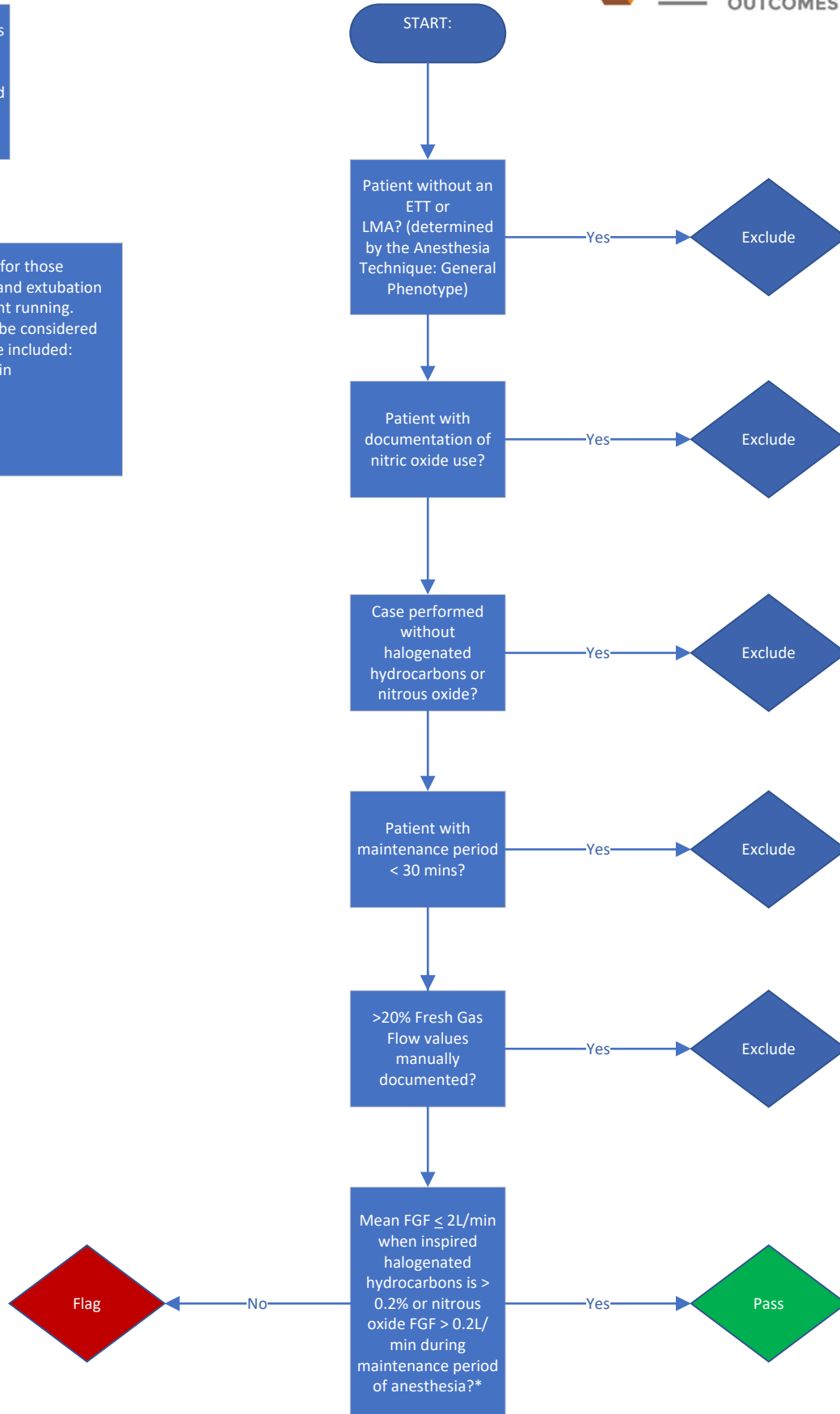


SUS-04: Percentage of patients with mean gas flow equal to, or less than 2L/min, during administration of halogenated hydrocarbons and or nitrous oxide.

\* FGF will only be considered for those minutes between intubation and extubation that also have an inhaled agent running. Values within this ranges will be considered artifact and the minute will be included:  
Nitrous Oxide Flows: <0.2L/min  
Isoflurane Insp%: <0.3%  
Sevoflurane Insp%: <0.4%  
Desflurane Insp%: <1.2%  
Nitrous Oxide Insp%: <20%



SUS-04: Fresh Gas Flow, less than or equal to 2L/min

**Measure Summary:** Percentage of cases with mean fresh gas flow (FGF)  $\leq$  2L/min, during administration of halogenated hydrocarbons and/or nitrous oxide.

**Measure Start:**

- **Intubation.** If not available, then
- **Induction End.**

**Measure End:**

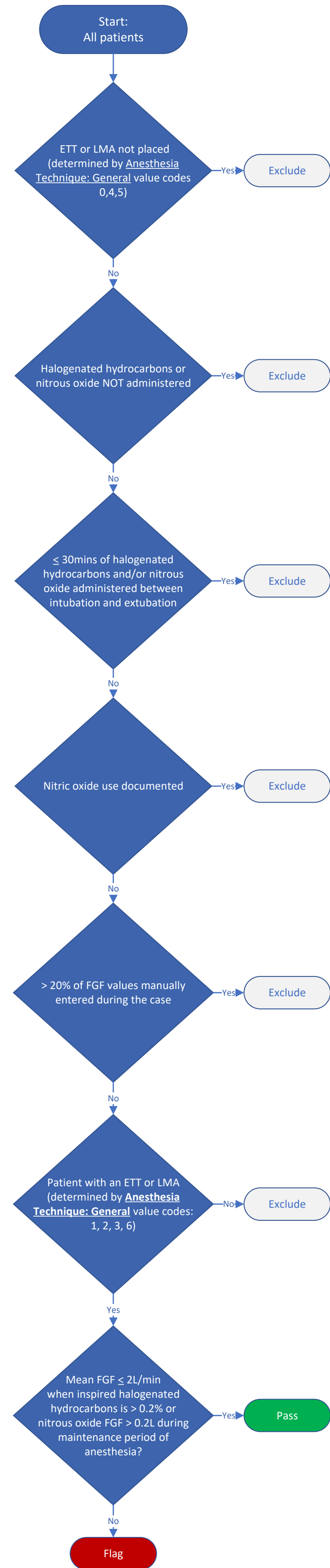
- Latest **Extubation Time.** If not available, then
- Latest **LMA Removal Time.** If not available, then
- **Surgery End.** If not available
- **Patient Out of Room.** If not available, then
- **Anesthesia End.**

\*Values for flows and gases will be assessed and considered artifact if inside the following ranges

Nitrous Oxide Flows	< 0.2L/min
Nitrous Oxide Insp %	< 20%
Isoflurane Insp %	< 0.3%
Sevoflurane Insp %	< 0.4%
Desflurane Insp %	< 1.2%

To Calculate Mean FGF:

1. Determine which flow values to include by identifying minutes where FGF and non-artifact inhaled agent or nitrous oxide are documented
2. Add all included FGF values and divide by the total number of included minutes



Anesthesia Technique: General Enumerations		
Value	Value Code	Definition
Invalid Value	-998	The case is missing either Anesthesia Start or Anesthesia End.
No	0	No general, ETT, or LMA not and no sedative medications or inhaled anesthetics or paralytics associated with the case.
General – both ETT and LMA	1	There were ETT and LMA notes associated with this case.
General – ETT	2	There was at least one ETT note, with another general or ETT note associated with this case. There were no LMA notes.
General – LMA	3	There was at least one LMA note. There were no ETT notes.
General – Inhaled Anesthetic Only	4	There were inhaled anesthetics associated with this case. There were not ETT or LMA notes.
General – Neuromuscular Blocker Only	5	There were neuromuscular blockers associated with this case. There were no ETT or LMA notes.
General – Unknown	6	There were both neuromuscular blockers and inhaled anesthetic associated with this case along with ambiguous general airway notes.

**SUS-04: Fresh Gas Flow, less than or equal to 2L/min**

**SUS-04:** Percentage of cases with mean fresh gas flow (FGF)  $\leq$  2L/min, during administration of halogenated hydrocarbons and/or nitrous oxide.

**Measure Start:**

- **Intubation.** If not available, then
- **Induction End.**

**Measure End:**

- Latest **Extubation Time.** If not available, then
- Latest **LMA Removal Time.** If not available, then
- **Surgery End.** If not available
- **Patient Out of Room.** If not available, then
- **Anesthesia End.**

*Values for flows and gases will be assessed and considered artifact if inside the following ranges	
Nitrous Oxide Flows	< 0.2L/min
Nitrous Oxide Insp %	< 20%
Isoflurane Insp %	< 0.3%
Sevoflurane Insp %	< 0.4%
Desflurane Insp %	< 1.2%
To Calculate Mean FGF:	
1. Determine which flow values to include by identifying minutes where FGF and non-artifact inhaled agent or nitrous oxide are documented	
2. Add all included FGF values and divide by the total number of included minutes	

