

**TEMP-04-Peds: Intraoperative Normothermia, Pediatrics**

**TEMP-04-Peds:** Percentage of pediatric patients < 18 years old who have a median core/near core body temperature > 36 °C (96.8 °F) during the procedure.

**Algorithm for determining Measure Start/End Times**

**Measure Start Time:**

- **Patient In Room.** If not then,
- **Induction Start.** If not then,
- **Induction End.** If not then,
- **Surgery Start.** If not then,
- **Anesthesia End.**

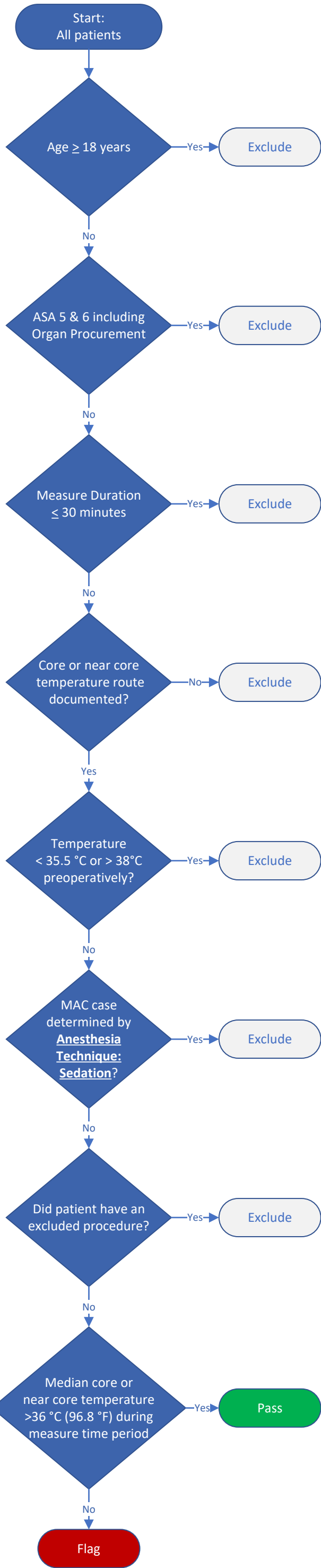
**Measure End Time:**

- **Patient Out of Room.** If not then,
- **Surgery End.** If not then,
- **Anesthesia End.**

Core and Near Core Temperature Routes	
MPOG Concept ID	Routes
3031	Temperature – Temporal Artery
3055	Temperature – Esophageal
3056	Temperature – Blood
3057	Temperature – Tympanic
3058	Temperature – Bladder
3059	Temperature – Nasopharyngeal
3060	Temperature - Axillary
3061	Temperature - Rectal

**Excluded Procedure Type:**

- Cardiac cases determined by **Procedure Type: Cardiac**
- **MRI Only** procedures
- **Endoscopy** procedures
- Unlisted Anesthesia procedure
- Labor Epidurals determined by **Obstetric Anesthesia Type**



**Artifact Logic:**

Step 1: Exclude all temperature values that are < 32 °C and > 40 °C

Step 2: Apply artifact to exclude minute-to-minute values ≥ 0.5 °C difference in temperature.

- Example: If Temp B at 0801 is ≥ 0.5 °C higher or lower than Temp A at 0800, then exclude Temp B

Step 3: Exclude first 5 minutes of temperature monitoring to account for probe warming

- Minute-to-minute: exclude first 5 values
- 5-minute interval: exclude first value

Step 4: Calculate Median of remaining temperature values

Instances where there are two temperature monitoring methods, the average of both temperature values is used to determine the value of a single minute