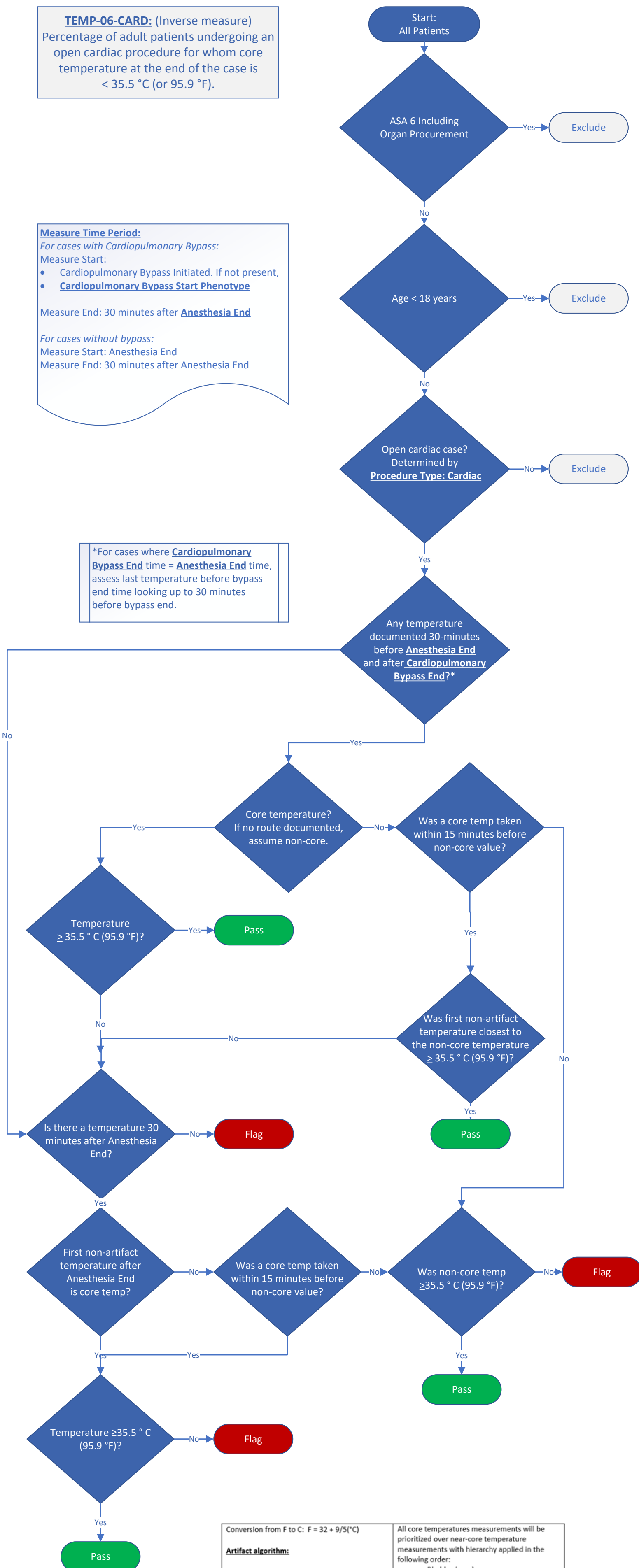


**TEMP-06-CARD: Hypothermia Avoidance in Cardiac Surgery**

**TEMP-06-CARD:** (Inverse measure)  
Percentage of adult patients undergoing an open cardiac procedure for whom core temperature at the end of the case is < 35.5 °C (or 95.9 °F).

**Measure Time Period:**  
For cases with Cardiopulmonary Bypass:  
Measure Start:  
• Cardiopulmonary Bypass Initiated. If not present,  
• **Cardiopulmonary Bypass Start Phenotype**  
Measure End: 30 minutes after **Anesthesia End**  
  
For cases without bypass:  
Measure Start: Anesthesia End  
Measure End: 30 minutes after Anesthesia End

\*For cases where **Cardiopulmonary Bypass End** time = **Anesthesia End** time, assess last temperature before bypass end time looking up to 30 minutes before bypass end.



Conversion from F to C:  $F = 32 + 9/5(°C)$

**Artifact algorithm:**

- Less than 32.0 °C (89.6 °F)
- Greater than 40.0 °C (104.0 °F)
- Any minute-to-minute jumps > 0.5 °C equivalent
  - Example: 0.125 °C/15s; 0.25 °C/30s; 1 °C/2mins

All core temperatures measurements will be prioritized over near-core temperature measurements with hierarchy applied in the following order:

- Bladder (core)
- Rectal (core)
- Blood (core) or PA catheter (core)
- Nasal (core)
- Esophageal (core)
- Zero-Flux thermometer (near core)
- Other non-core routes (axillary, oral, skin, temporal, tympanic)

Temperature documented within the anesthetic record or temperatures documented and mapped to the temperature physiologic concepts are acceptable sources for this measure. Temperatures mapped to MPOG note concept (50174 Postoperative Vital Signs) will only be used if no other core or non-core temperatures are found during the time period.