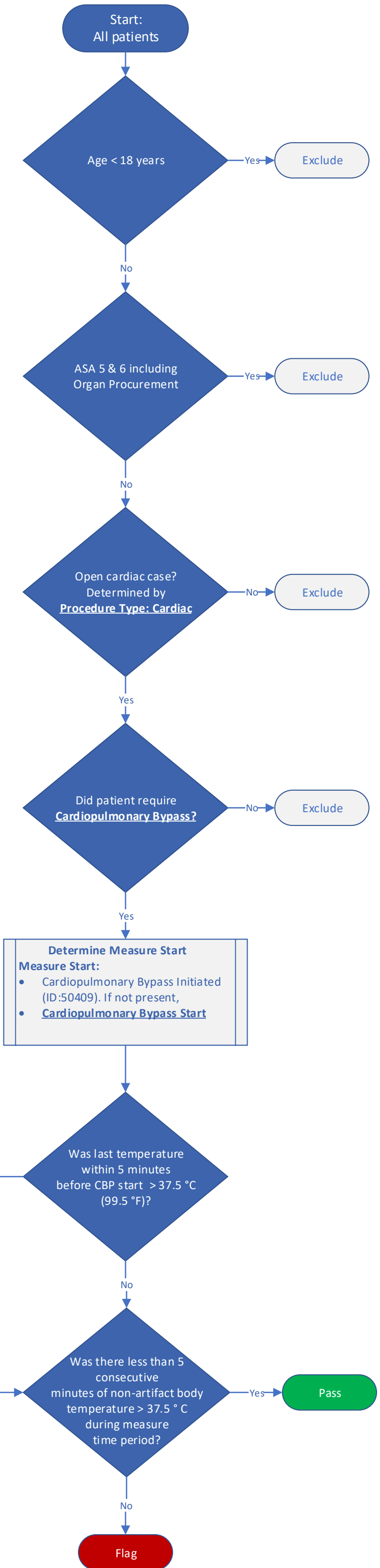


TEMP-07-CARD: Hyperthermia Avoidance in Cardiac Surgery

TEMP-07-CARD: (Inverse Measure)
Percentage of adult patients undergoing an open cardiac procedure for whom core temperature was >37.5 °C (99.5 °F) for over 5 consecutive minutes while on cardiopulmonary bypass.

Measure Time Period
Measure Start:
 • Cardiopulmonary Bypass Initiated (ID:50410). If not present,
 • **Cardiopulmonary Bypass Start**
Measure End:
 • Cardiopulmonary Bypass Terminated (ID:50409). If not present,
 • **Cardiopulmonary Bypass End**
 • **Anesthesia End**



All core temperature measurements will be prioritized over near-core measurements with hierarchy applied in the following order:

- Arterial Bypass Cannula Temperature (Concept ID: 3263)
- Nasopharyngeal (Concept ID: 3059)
- Esophageal (Concept ID: 3055)
- Blood (Concept ID: 3056) or keyword 'PA catheter'
- Bladder (Concept ID: 3058)
- Rectal (Concept ID: 3061)
- Zero-flux thermometer (non-core) – via keyword search of temperature routes
- Other non-core routes (axillary, oral, skin, temporal, tympanic, unspecified)

Artifact Algorithm

- Less than 32.0 C (89.9F)
- Greater than 40.0 C (104.0 F)
- Any minute-to-minute jumps > 1C/1min
 - Example: 0.25C/15s, 0.5C/30s, 1C/1min