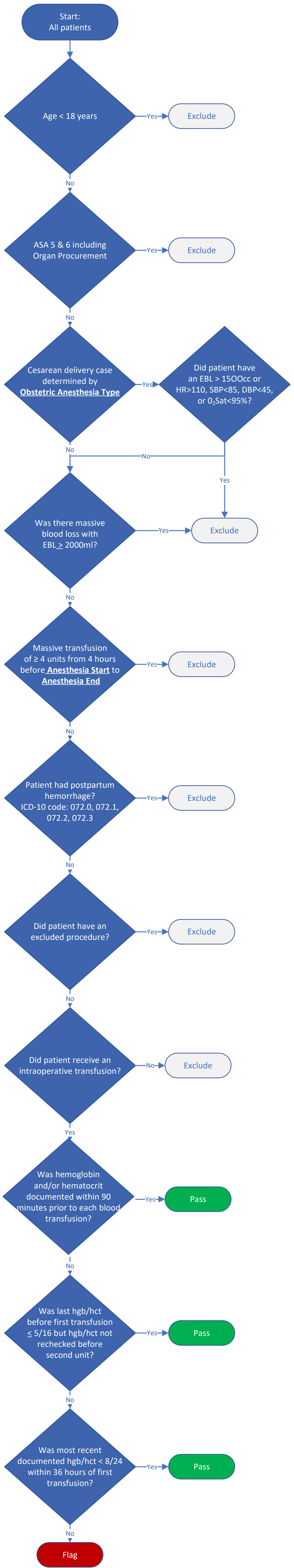


TRAN-01: Transfusion Management Vigilance

TRAN-01: Percentage of adult patients receiving a blood transfusion with documented hemoglobin or hematocrit value prior to administration.



Excluded Procedures:

- Burn Cases
- Cardiac Cases determined by the **Procedure Type: Cardiac** (value codes > 0)
- Labor epidurals determined by the **Obstetric Anesthesia Type** (value codes 3 & 6 including obstetric non-operative procedures)

Transfusion is defined as:

- Packed Red Blood Cells – Autologous, Homologous, Unknown Type
- Whole Blood – Homologous, Unknown Type
- Categorized Note – Blood Products

*Note: For sites that document transfusion in mL instead of units: ASPIRE will default to 300mL/unit