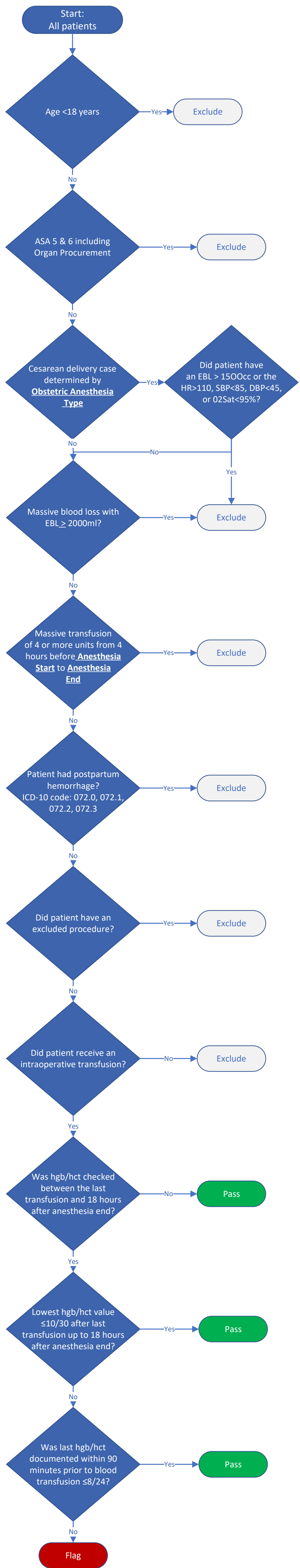


TRAN-02: Overtransfusion

TRAN-02: (Inverse Measure)
Percentage of adult patients with a post transfusion hemoglobin or hematocrit value greater than or equal to 10 g/dL or 30%.



Excluded Procedures:

- Burn Cases
- Cardiac Cases determined by the **Procedure Type: Cardiac** (value codes > 0)
- Labor epidurals determined by the **Obstetric Anesthesia Type** (value codes 3 & 6 including obstetric non-operative procedures)

Transfusion is defined as:

- Packed Red Blood Cells – Autologous, Homologous, Unknown Type
- Whole Blood – Homologous, Unknown Type
- Categorized Note – Blood Products

***Note:** For sites that document transfusion in mL instead of units: ASPIRE will default to 300mL/unit